



THE Birches

**A NEWSLETTER FOR KINGSTHORN,
MUCH BIRCH, LITTLE BIRCH & ACONBURY**

First published 1977 **November 2019**

Diary Dates

October 2019

30th Kingsthorpe & LB Garden Club LBVH 7.30pm

November 2019

3rd Parish Walk LBVH 9am

3rd Flower Demonstration MBCH 7.30pm

7th Coffee Morning LBVH 10.30am

7th Parish Council Meeting MBCH 7.30pm

9th Community Café MBCH 10am

12th Whist Evening LBVH 7.30pm

13th Table Tennis LBVH 7pm

15th "Foreign Correspondent" MBCH 7.30pm

16th Quiz and Curry Evening LBVH 7.30pm

21st Flicks in the Sticks MBCH 7.30pm

27th Gardening Club Talk LBVH 7.30pm

30th Christmas Fayre MB School 11am

December 2019

5th Parish Council Meeting MBCH 7.30pm

6th Village Market MBCH 2.30pm

12th Willow Weaving LBVH

Panto rehearsals every Friday 6-10pm and Sunday 2.30-5pm at LBVH



LITTLE BIRCH VILLAGE HALL

PUB QUIZ & CURRY EVENING

Saturday 16th November at 7:30pm



Teams of 4

**Just £5 per person to include a curry
The bar will be open.**

Remembrance Services November 2019



There will be a number of remembrance services on Sunday 10th November :

Much Birch Remembrance with Communion at 9.15 a.m. followed by placing of crosses in the churchyard.

Much Dewchurch Remembrance with Morning Worship at 9.15 a.m. followed by laying of a wreath at the village war memorial.

Llanwarne Remembrance with Communion at 10.50 a.m. followed by a parade to the village war memorial, laying of wreaths and reading of names. There is also lunch at Llanwarne Village Hall afterwards – please book on 01981 540406

Little Birch Remembrance with Morning Worship at 10.50 a.m. with the laying of a wreath on the village memorial in the churchyard of St. Mary's

Remembrance at the Wormelow War Memorial, Tump Lane.

On Monday 11th November, please join us at 10:30 a.m. to remember the fallen of the last two world wars and those of more recent conflicts. We will be joined by some of the children from Much Birch C of E Primary School as we lay wreaths, hear poems and prayers and remember.

Join us at the

Community Café @ Much Birch Community Hall

2nd Saturday of the month

10:00 - 12:30

9 November

14 December

12 January

For more information or if you are in need of transport contact Lydia on 01981 540323 or socialfabric@hotmail.com



A local group who want to bring people together, strengthen community links and provide relaxed and fun events for all ages.

Little Birch Village Hall Committee

Newsletter notices for November 2019

Coffee Morning

The next coffee morning will be on **Thursday 7th November 10:30am - 12:30pm** at **Little Birch Village Hall**.

Join us and enjoy a cup of tea or coffee, some cake or a biscuit. Make new friends or catch up with old friends, have a chat and find out more about the local community and let us know your thoughts and suggestions as to how we can develop these regular meetings.

If you need help with transport, please contact Margaret: 01981 540374

Whist Drive

We guarantee a warm welcome and a fun evening with good company at our monthly whist drive whatever your ability. Excellent prizes and refreshments too.

Our next **Whist Drive** will be on **Tuesday 12th November** at Little Birch Village Hall. We start at **7.30 pm** and the entrance fee is just £2.00.

Community Book Exchange/Lending Library

The next Book Exchange will be on the morning of **Saturday 16th November** at the former Methodist Chapel opposite the Village Hall **10am – 12noon**.

All members of the community are invited to join us for this enjoyable monthly event which offers not only a wide range of books and DVDs (to suit all ages and interests) but also an opportunity to meet others and exchange recommendations for a good read.

There is a charge of just £1 per adult towards the cost of the hire and refreshments.

Table Tennis Sessions

The next table tennis session will be on **Wednesday 13th November** at Little Birch Village Hall **between 7pm and 9pm**. All abilities are welcome as the idea is to have a bit of fun and exercise. Equipment is supplied. Sessions are once a month, but could be more frequent if there is enough demand. Similarly, if there is sufficient interest, we may also be able to manage a day session. Tea and coffee will be available. £2.00 per session to cover cost of refreshments and heating.

If you are interested and would like more information call Angela Middleton on 01981 540377 or Peter Rees on 01981 541356

Art and Crafts Club

Weekly sessions of the Art and Crafts Club take place **every Thursday during November from 2pm – 4pm** at Little Birch Village Hall. Sessions include drawing, painting, creative writing, knitting, crochet, quilting or any other crafts which people are interested in. We have beginners as well as

seasoned and talented members. Bring your own materials and enjoy time with like-minded people. Some craft work. We will occasionally have contributions from external speakers/presenters, as this has been very popular. Why not come along and see what it's like – new people are always made very welcome. For further information contact: Val On 01981-540424 or mobile 07854-244656, or Maz on 01981-541048.

Pub Quiz and Curry Night

Join us on **Saturday 16th November, 7:30pm** at **Little Birch Village Hall** for a **pub quiz and curry night**.

Teams of 4 people. Tickets are just £5 per person to include a curry. The bar will be open.

There will be a prize for the winning team



This season's pantomime, **Treasure Island**, will be performed by the Birches Amateur Dramatic Group, under the direction of Jane Bolam at Little Birch Village Hall on the evening of Friday 31st January 2020 with a matinee on the afternoon of Saturday 1st February and a final performance on that evening. Auditions took place on the 13th September but there may still be places available for both adults and children to come along and be part of a really enjoyable experience. Previous acting experience is not necessary. All we ask is for a commitment to turn up at rehearsals on most Friday evenings and Sunday afternoons with occasional Saturday afternoons as and when required.

We are always on the lookout for new members so if you are interested in joining the cast or crew and were not available to attend the audition evening, please come along to Little Birch Village Hall on Sunday 6th October at 2:30pm. If you are not confident enough to tread the boards just yet but would still like to be involved, we always welcome anyone handy with a toolkit or paintbrush to help build the sets and props. The construction crew usually meet at the village hall on Tuesday mornings at 9:00am. For further information contact David Baldwin on 01981 541198

MERRIVALE ORGANIC BEEF

We have quality beef available direct from our farm in Little Birch to your doorstep. It is organic grass fed Wagyu Cross beef which has been born and raised at Merrivale Farm. The Wagyu breed is known for its beautiful marbling which gives a delicious flavour and texture to the meat.

The beef is available in mixed boxes which start at £65. Individual cuts and packs are also available.

Contact Lucy for more information on 07974 053804 or lucymason@hotmail.com



**Hereford Centre For
Natural Health**

THE Centre in Hereford for Complementary Therapies

18 different therapies provided by
highly trained and experienced staff.

The Very Best Help for Your Health

Eastholme Avenue, Belmont, HR2 7XT
Hereford Tel: **01432 279 653**
www.herefordcentreformaturalhealth.com

Hereford Civic Society
Kindle Centre, by Hereford ASDA
Thursday November 21st @ 7.30pm

Speaker: Marsha O'Mahoney, local historian
Subject: River Voices: drawing upon oral and
documentary history, stories of swimmers, walkers,
anglers, ferry women and men, canoeists, bailiffs,
poachers on the River Wye.

Non-members welcome: £3 donation.
Annual Membership £15 (10 meetings pa + quarterly
magazine).



MUCH BIRCH SCHOOL
PTFA

Christmas Fayre

SATURDAY 30TH NOVEMBER 11-1PM

IN THE SCHOOL HALL

FREE ENTRY.
Raffle, Craft stalls, Santa's Grotto, Children's
Christmas crafts, Hot pork rolls and mulled wine
Contact Lisa on 01981540676 if you'd like a table

Parentkind
Member Association

AVALON TREE SURGERY

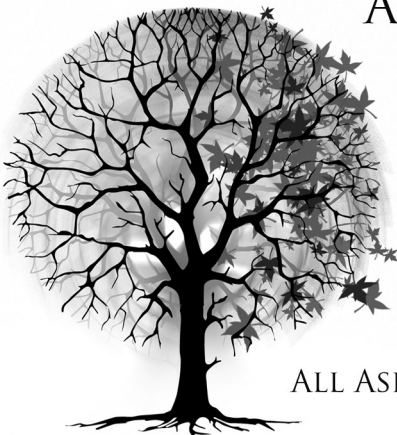
WE CARE FOR YOUR TREES

MATTHEW THOMAS
OVER 10 YEARS EXPERIENCE
NPTC QUALIFIED
FULLY INSURED

WWW.AVALONTREESURGERY.CO.UK

07794 569284

ALL ASPECTS OF TREE WORK UNDERTAKEN



Much Birch Christmas Village Market

will be held in the Community
Hall on Friday 6th December
2019 at 2.30pm until 4.30pm.
There will be the usual stalls
but it is also an opportunity for
people to hold a one-off stall
at £5.00 per table. If you are
interested in making a
booking, please contact John
and Sylvia Jones on tel: 01981
540980. Refreshments will be
available as usual.

ART & CRAFTS CLUB



Although the nights are drawing in, it's no reason to hibernate! Instead start a new hobby or revive an old one by coming along to ART & CRAFTS CLUB for a couple of hours a week at LBVH.

This group, originally named ARTSPACE, started as an art group led and tutored by Maz has now evolved into ART & CRAFT CLUB. Alongside the painting it now includes knitting, crochet and creative writing.

We have beginners as well as seasoned and talented members who bring their own materials and enjoy their time with like-minded people. We will occasionally have contributions from external speakers / presenters as this has been very popular.

Why not come along and see what it's like - new people are always made very welcome

ART & CRAFTS CLUB is on Thursdays 2-4pm at Little Birch Village Hall

For further information contact:
Val 01981 540424 / mob: 07854 244656 or
Maz 01981 541048

Footprints

Our 'Fungus Foray' in Aconbury Woods with Jo Weightman, Group Recorder for the Hereford Fungus Survey Group, was an enormous success. Accompanied by Mike and Shelley - also from the HFSG - twenty-seven of us searched for fungi which were quickly identified, recorded and stored away by Jo.

Whoops of excitement went up as we found such varieties as an 'Amethyst Deceiver', 'Stinkhorn', 'Shaggy Parasol' and 'Puffball'. Jo explained that toadstools and mushrooms are actually the fruit bodies of an underground fungal mycelium network. Describing the unique methods each fungus employs to spread its spores, e.g. by shooting them into the air, bursting, or dropping them onto the ground through vertical tubes, Jo said that one fungus even smells like dead meat to attract flies, so they carry spores away on their legs!

Our fascinating walk was rounded off with a welcome, warming lunch in LBVH, which raised over £50 for Jo's charity: 'Mary's Meals'.

**If you missed the Fungus Foray or wish to learn more, Jo will give a talk at the Gardening Club on October 30th in LBVH at 7.30pm.*

Parish Walk

Sunday 3 November at 9am meeting at Little Birch Village Hall.

We have an autumnal walk down to and circling Athelstan's Wood - 4 miles and maybe a bit muddy and with stiles.

Refreshments back at the hall. All welcome!

Angela
Little Birch Volunteer Footpath Officer
01981 540377
ajbmiddleton@hotmail.co.uk

Much Birch

Parent, Baby and Toddler Group

Come and Play!

Chat and fun for all
Snacks
Drink lots of Tea or Coffee!
Crafty Activities
Make new friends
Outdoor and indoor toys and play
Friendly and Relaxed

*Much Birch
Village Hall
Every Friday
9.30am - 11.30pm
Birth to 4 years*



For more information please contact:
Karen 07817716137 or Lucy lcook8910@gmail.com

décor solutions

**Tim Jones
Painter and Decorator**



**Kings Thorn, Herefordshire, HR2 8AW
Tel: 01981 540242 Mob: 07810 895355
tjsi@me.com**

Three generations of experience specialising in Painting and Decorating services.
General property maintenance duties carried out.
Fully insured. Good competitive rates.
A high standard of workmanship and customer satisfaction guaranteed.

A NOT SO FOREIGN CORRESPONDENT IN IRELAND

Kieran Cooke was a foreign correspondent for the BBC, Financial Times and The Independent for more than thirty years. In this talk he will read from his book, sharing his collection of whimsical reminiscences from his time as a correspondent in Ireland. He will also describe reporting elsewhere; chasing Colonel Gaddafi around the desert in Libya, dining with the Sultan of Brunei and conversations with villagers living in the shadow of Chernobyl.
Copies of Kieran's book will be available to buy at this event.

Friday 15 November 2019

7.30 pm

Much Birch Community Hall

Tickets £5 to include a glass of wine

Tickets can be booked in advance by calling 01981 540097 and will also be available on the door.

Proceeds for Much Birch Community Hall kitchen refurbishment.

BRIDGE LESSONS FOR BEGINNERS. Interested in learning bridge? Steve Lawrence, an experienced bridge teacher, will be running a course of 2 terms of ten 2 hour lessons costing £50 per term. The lessons will be held on either Thursdays or Fridays starting at the end of September in Alton Street, Ross-on-Wye. For further information, contact Steve on 01989 218432 or email sjlawrence009@gmail.com. More info can be found on the Ross Bridge Club website www.rossonwyebidgeclub.org.uk.

Enjoy playing bridge within a year!

Please send copy for the December Newsletter to editorial@birchesnews.org.uk or written contributions to Liz Hall at Walmere, Wrigglebrook, Kingsthorpe HR2 8AW.
—by **18th November** please.

A New Yoga and Movement Studio for Hereford.

CLEAR SPACE STUDIOS
let movement be your medicine

WHAT'S ON AT CLEAR SPACE?

So many kinds of Yoga!

Dance

Meditation

Mindfulness

Pilates

Tai Chi

Weekend Workshops

Craft Groups

Community Meet Ups

Singing

Space for Hire for Groups

..and the list just keeps getting longer!

Daytime, evening and weekend groups.

Visit our website for much more information

www.clearspacestudios.co.uk



THE AXE & CLEAVER

Much Birch, Hereford, Herefordshire. HR2 8HU

Tel No: 01981 540203

Proprietors Andy & Sue Hoare

WEEKLY SPECIALS

MONDAY –FRIDAY LUNCHTIME SPECIAL

TWO COURSES

£9.95

~~~~~

**WEDNESDAY**

**SENIOR CITIZENS' LUNCH**

**TWO COURSES**

**£6.95**

~~~~~

SUNDAY LUNCH

TWO COURSES

CHOICE OF THREE ROASTS

+

CHOICE OF DESSERTS

£12.95

BOOKING ADVISABLE

R&R FIREWOOD

Well seasoned hardwood

Cut to any size

Delivered to your door

STEPHEN or TARA

Tel: 01432 870282



CROSS ROADS CARE

Forest of Dean &
Herefordshire

**Crossroads Care are a specialist charity
working to help and support unpaid carers**

If you are caring for a family member, friend or neighbour, our Health and Wellbeing Service may be able to assist you. We offer a range of services

Call us on 01432 355373

www.crossroadshereford.org.uk

info@crossroadshereford.org.uk

Fred Bulmer Centre, Wall Street, Hereford, HR4 9HP

Registered Charity Number: 1086841



BRENDAN MORRIS

CONSTRUCTION & CARPENTRY

SPECIALISING IN uPVC WINDOWS, DOORS & CONSERVATORIES

call now for a free quotation
on; 07855760912
email

brendanmorris05@gmail.com



St Michael's Hospice
Always a place of light and love

St Michael's Hospice – Light up a Life

Remembering family, friends and colleagues and reflecting on the times we spent together.

Light up a Life gives you the chance to celebrate their lives – by lighting a candle, placing a dedication in St Michael's 'Books of Remembrance' and, if you wish, attending one of the special events taking place throughout Herefordshire and the surrounding area.

The full list of Light up a Life services is below. For more information, including details on how to leave a dedication in a Book of Remembrance, visit st-michaels-hospice.org.uk

St Michael's Hospice, Bartestree - Thursday 28th November - 5.30pm
Lyde Arundel, Lyde – Sunday 1st December – 2.30pm
St Michael & All Angels Church, Kingstone – Sunday 1st December – 4pm
St Francis Roman Catholic Church, Ross – Sunday 1st December – 6.30pm
St Michael's Church, Brimfield – Sunday 1st December – 6.30pm
St Francis Xavier Church, Hereford – Wednesday 4th December – 7pm
St Peter & St Paul's Church, Weobley – Wednesday 4th December – 7.30pm
Café Morso, Colwall – Thursday 5th December – 6pm
St Mary the Virgin Church, Marden – Sunday 8th December – 11.15am
Steiner School, Much Dewchurch – Sunday 8th December – 3.30pm
Methodist Church, Bromyard – Sunday 8th December – 4pm
St Andrew's Church, Hampton Bishop – Sunday 8th December – 4pm
St Mary's Church, Kington – Sunday 8th December – 5pm
Leominster Methodist Church – Sunday 8th December – 5pm
St Mary the Virgin Church, Burghill – Sunday 8th December – 6.30pm
St Mary's Church, Hay-on-Wye – Thursday 12th December – 6.30pm
Hereford Cathedral – Sunday 15th December – 5.30pm

Paul Broome

Communications Officer, St Michael's Hospice
Tel 01432 852 643 - st-michaels-hospice.org.uk
facebook.com/stmichaels-hospice-hereford
twitter.com/stmichaels-hospice



ELECSA

KEN RUCK

DOMESTIC ELECTRICIAN

Fault Finding & Repair	Reliable Service
New Consumer Units	Fully Insured
Outside / Security Lights	Re-Wires
Periodic Testing	P.A.T Testing
Smoke & CO Alarms	Showers
Cookers e.t.c	

PROPERTY MAINTENANCE

Plumbing – Fault Finding & Repair
+ General Property Maintenance

Contact:

07780460258 or kenruck1956@hotmail.com

Or Visit my Facebook Page.



Birches Home Help

Based in the heart of the Birches parishes

Contact us for short-term or regular help in the home and beyond. We have over 25 years experience in health and social care and can provide a solution to make life a little easier.

Domestic tasks, help with appointments, shopping, carers breaks, pet care, form-filling, companionship, bereavement support and much more.

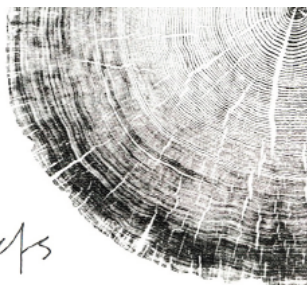
We are fully insured, have enhanced DBS and can provide references upon request.

Call Sarah on 07849 151085 (any messages left will be responded to the same day) or email us on sarahbirches@gmail.com



ARBOR

architects



Arbor Architects is a local practice offering a high quality design service and extensive expertise in sustainable construction, to help you unlock the potential of your building project.

We can add value at every stage of the process:

- Feasibility studies
- Planning applications
- Detail design and tender packages
- Construction detailing and contract administration

Contact Elly Deacon Smith and Matt Hayes for a free 45 minute consultation:

e: info@arborarchitects.co.uk

t: 07890 051252

w: www.arborarchitects.co.uk

Concerts for Craswall



Rogers Covey-Crump with The Windsor Box&Fir Co

Saturday October 12th at 5pm
St Mary's Church, Craswall HR2 0PN

The Maiden & the Thief.

Popular Spanish music from street & stage

In an enchanting programme featuring one of the greatest English tenors Rogers Covey-Crump, the music explores the age-old themes of love, joy and sadness in songs accompanied by early instruments.

For more information, please see

<https://concertsforcraswall.org/forthcoming-events/>

Tickets £15 or £7.50 for students under 25 years

To book online <https://concertsforcraswall.org/shop/>

Or by phone 01981 510112

We look forward to seeing you there!

KINGS THORN & LITTLE BIRCH GARDENING CLUB

Wednesday 30 October – talk on Fungi by Jo Weightman – very topical for the time of the year. **PLEASE NOTE** it is the last Wednesday of the month.

Wednesday 27 November – Bill Laws is coming to talk to us on The Curious History of Vegetables. I am assured that this is a light-hearted look at all things vegetable so we might be in for a few surprising facts.

As always meetings start at 7.30pm in the Village Hall, Little Birch and members old and new and visitors are always very welcome to join us. Refreshments available and at some meetings, donation box for produce and plants.

If you have any questions, please don't hesitate to call me, 01981 541198 or email – baldwin.jen@hotmail.co.uk.

Happy Gardening.

Jenny Baldwin, Programme Secretary

Many thanks to all those who so generously sponsored Cathy and John Sadler's 45- mile HHCT 'Ride and Stride,' cycle ride to 14 local churches on September 14th. We finally made £608, which will be split between our Saint Mary's much-needed church repair fund and Hereford Historic Churches' Trust, which helps fund all county church renovations.

The weather for our 10-hour ride was perfect: golden sunshine all day but not too hot for pedalling up the many steep hills! We thought disaster had struck when I developed a flat back tyre early in the day. Luckily it was not a puncture from the dreaded blackthorn hedge-clippings that strew the roads in September, but a leaky valve which was quickly remedied, thank goodness.

Altogether a thoroughly enjoyable ride, an opportunity to visit some beautiful, ancient Herefordshire churches and great fun, as always. Thanks again to every-one!

No Stress, No Worries,

Glazy Days

- ◆ CONSERVATORIES
- ◆ WINDOWS
- ◆ DOORS
- ◆ FASCIAS
- ◆ SOFFITS
- ◆ GUTTERS

01981 541121
07818 611010
www.glazydays.net
Email: sales@glazydays.net

LINE DANCING FOR BEGINNERS NOW BEING INTRODUCED AT MUCH BIRCH

I am a fully qualified linedance teacher with over 20 years teaching experience and 30 years dancing. Currently I run an established linedance class in Much Birch Community Hall - Wednesday evenings-7.30 - 9.30.

As from 6th November I am changing the structure of the class and would welcome any beginners to join us. The first hour will be dedicated to teaching Beginners linedance steps followed by easy dances'

This is a great chance to learn one of the most popular forms of dance, to socialise and to have fun.

£4 all night or any part thereof

Jean tel :07506718907



GARTH BRADBURY FENCING LTD

All types of fencing

Gates

Field Shelters

Timber Outbuildings

www.gb fencing contractors.com

garthbradburyfencing@hotmail.com

01981 541385 : 07970 346460

KILPECK:

Dates for your calendar, all at Kilpeck Village Hall (HR2 9DW)

KILPECK ART CLUB restarts on Monday 9th September; 2 – 4pm. Come along to a free taster session and a warm welcome.

CRAFTS@KILPECK Fayre: our next event will be on **Saturday 9th November: 10.00 - 2pm.**

Browse unique gift ideas, cards and foody delicacies!

Tables available: bwkvh19@gmail.com

Beth Wood

Secretary: Kilpeck Village Hall

bwkvh19@gmail.com

Much Birch Community Hall 100 Club

Results of the 100 club draw which took place on 13th October 2019 in the Community Hall are as follows:

1st prize – No.31 2nd prize - 43 3rd prize – No.41

Mr. R. Brimacombe Mrs. K. Dawson Miss P. Dawson

Much Birch King's Thorn Kivernoll

The next draw will take place on 10th November 2019 at 10.30am in Much Birch Community Hall.

John Jones, Promoter

CUSTOMER'S
SUPPLIERS
SALES
RECEIPTS
PURCHASES
BOOKKEEPING
JOURNALS
RECORDING
INCOME
SYSTEM
TRANSACTION
LEDGER
DAYBOOK
GENERAL

EJ PARTINGTON BOOKKEEPING

Bookkeeping & Accounting Specialist

Woodfield, Hollybush Lane, Much Birch, HR2 8HX

07989 854593 / 01981 541109

emmadeer@hotmail.co.uk

Bookkeeping	VAT Returns
Invoicing	Management Accounts
Payroll	Self-Assessment Returns

Emma Partington has over 10 years experience in the finance industry both in practice and in industry, a local business that is able to help with all your bookkeeping needs.

Call or e-mail today for a no obligation discussion about your requirements.

Ping's

Hairdressing & Barbers

Experienced hairdresser

and stylist located in own salon at Thorn Lodge, Aconbury Close (old Post Office site).

Home visits can also be arranged.

Weekend and evening appointments available.

Reasonable rates. Fully C&G and NVQ certified.

For appointments and further information

Ring Mobile 07450 343454

Or Home 01981 540876





www.greenleafarchitecture.co.uk
E. info@greenleafarchitecture.co.uk
Tel. 01981 257180 M. 07946457251

Friendly and reliable, chartered Architectural Practice based in Wormelow.

All Architectural work undertaken. General advice; Planning applications; Detailed design for Building control and Tender; Project management



ROSS CIVIC SOCIETY: The next illustrated Talk will be held after the AGM on **Wednesday 13th November** at the Lar-ruperz Community Centre, Ross. The AGM will start at 7.00 p.m., followed by refreshments then, at 7.45 p.m. approx. the Speaker, **Carol Killinger**, will describe BER-RINGTON HALL, Herefordshire, the 18th century Family, Fashion and Murder Most Foul.

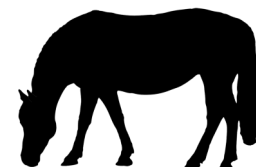
All interested are welcome; admission is free.

For further details ring the Secretary on 01989 562424

Grazing Available

Small Paddock with Stable

Tel: 01981 540501



Horse/pony/animal help available -

Very helpful, young, teenage girls are looking to help on a local yard in exchange for a ride (or help with other animals for some pocket money)

07866 006582



www.bgbuk.com

info@bgbuk.com

Your one-stop design and planning solution

With over 10 years Industry experience

- Planning Drawings & Applications
- Homes, extensions & listed buildings
- Historic & Timber Building Survey & Consultancy
- Architectural Drawing & Design
- Repair & Conservation of Historic Buildings

We specialise in Planning drawings/applications

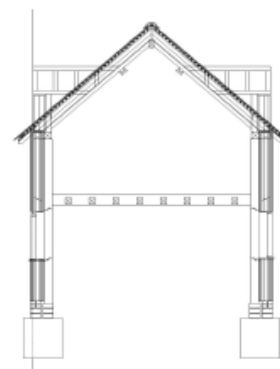
& 3D architectural design.



Design & Consultancy

www.bgbuk.com info@bgbuk.com

Tel: 01432 607 407



**BAYLEY'S
WINDOW CLEANING
SERVICE**

WATER FED POLE AND TRADITIONAL

WE ALSO CLEAN:-

- ⇒ GUTTERS AND FACIAS
- ⇒ CONSERVATORY ROOFS

FREE QUOTATIONS

* REFERENCES CAN BE GIVEN *

* ESTABLISHED IN AREA *

PHONE ANDREW

HOME: 01432 508979

MOBILE: 07771 870891

Email: bayleyscleaning@gmail.com

**WILLOW WEAVING WORKSHOP – ADVANCE
NOTICE**

Clyde of Wildwicker, Wobbage Farm will be doing a workshop on a Christmas themed garden obelisk. This will take place on **THURSDAY 12TH DECEMBER** at **LITTLE BIRCH VILLAGE HALL**. All materials and tuition provided.

Limited places so book early!

Interested? Please contact Janet Gwinnet:
janetgwinnet@hotmail.com or Jenny Baldwin :
baldwin.jen@hotmail.co.uk for more details and fee.



**Healthy
Efficient
Sustainable**

Award winning straw and timber panel system for your house, extension or a garden studio

Contact: George Mikurcik 07817 779419
Website: ecococon.eu



Emily's cakes and Bakes
Sponge cakes for all occasions

Emily MaSON
Merrivale Farm
Little Birch, Hereford
07966 458961
emilyfranklin1@aol.com

Delicious homemade, classic
sponges, scones and cupcakes.
Freshly made to order.
Free delivery within the area

**W.M.
PARTINGTON**

GENERAL BUILDER

- MINI-DIGGER & EXCAVATOR HIRE

RENOVATIONS
BARN
CONVERSIONS
NEW BUILD
EXTENSIONS

ROOFING
CONCRETING
PLASTERING
GROUNDWORK

UPVC WINDOWS
AND DOORS
BRICKWORK
STONEMASONRY

RING FOR A QUOTATION

MUCH BIRCH
07774 805369 / 01981 541109

LocalCarer

Over 15 years of experience

For all aspects of care within
the comforts of your own
home



Call Kim for advice

07944 745853

Great Local Food & Drink in Much Birch

All Day Every Day



Country Hotel with Luxury Bedrooms

Choose the Pilgrim for your next country getaway or business trip and enjoy some fabulous hospitality, stunning views across Herefordshire and great, fresh local food & drink.

The Hotel has been in the same hands for 16 years and has undergone massive improvements in that time. Steve Boyle, the owner & former England & Lions rugby player assisted by his friendly team, look forward to welcoming you to the Pilgrim Hotel very soon, to enjoy a touch of luxury & great food in the stunning Herefordshire countryside.

Menus on website www.pilgrimhotel.co.uk
Booking is recommended - 01981 540742

- ◆ Breakfast Butties
- ◆ All Day Cake
- ◆ Lunch
- ◆ Afternoon Teas
- ◆ Dinner
- ◆ Celebration Buffets
- ◆ Murder Mystery Dinners
- ◆ Food with a View

The Pilgrim Hotel

Much Birch HR2 8HU

Email stay@pilgrimhotel.co.uk

POLISHED NAIL & BEAUTY LOUNGE

"Where friends and beauty meet...."



A GIRL SHOULD BE TWO THINGS

Classy & Fabulous

*Coco Chanel

OPI MANICURES * PEDICURES * GEL POLISH * SCULPTURED ACRYLIC/
GEL NAIL EXTENSIONS * BEACH/HOLLYWOOD TOES * SIGNATURE
EYEBROWS—SCULPT, COLOUR AND CORRECT * THREADING *
*WAXING * SEMI PERMANENT EYELASHES

REGULAR AESTHETIC CLINICS WITH Dr Sarah Parkes

GENTLEMANS LOUNGE HELD EVERY WEDNESDAY AFTERNOON FROM 2-5PM

'The Wood Shed'

Pengethley Garden Centre, Peterstow, Ross on Wye, HR9 6LL

Email Polished.jacqueline@gmail.com



Polished-Nail And Beauty

01989 730791 or 0775913783

OPEN: TUESDAY-SATURDAY 9am-5pm. Complimentary Tea and Coffee



**FLICKS
IN THE
STICKS**

**at Much Birch
Community Hall**

**Thursday 21 November, 7.30 pm -
EATEN BY LIONS 12A**

Omar and Pete are half brothers. When their parents are eaten by lions they embark on a journey to find Omar's real father. What follows is a funny, heart-warming journey of self-discovery for both boys...in Blackpool. The Choudray family represents a truly contemporary example of modern multicultural Britain - but what will the brothers make of their eccentric newfound family? Will they be going to Mecca or Mecca bingo?

Refreshments including hot dogs available from 7pm

Coming up in December...
Thursday 12 December, 7.30 - ROCKETMAN 15

Tickets £4.50 (£3.50 under 16s)

Tickets available in advance or on the door - for further info or to book tickets please email muchbirchflicks@hotmail.com or call 01981 540097

For further information about films and screenings visit www.artsalive.co.uk (online booking available!)

FLICKS IN THE STICKS



About Us

Carrot&Wine Stores is brand new to the Hereford area. Our family run company aims to offer all the convenience and family friendly service of a local store with the added benefit of locally sourced produce.

We stock local groceries, meats and cheese to local award winning cider, wine and all the daily essentials such as bread, milk, eggs and newspapers.

Open 7 days from 7am to 9pm
Find us at Wormelow on the A466!

(Postcode for Sat Nav: HR2 8EJ)

CARROT&WINE STORES



WORMELOW

AQUASSIST

LIQUID WASTE SOLUTIONS

Septic Tanks & Treatment Plants

- emptying
- servicing
- jetting
- installations
- blocked drains
- emergencies

Locally based company
 01432 353 888
book@aquassist.co.uk
www.aquassist.co.uk





You are invited to a

Demonstration of Flower Designs For Christmas

by
Sandra Snell
of The Flower House
Ross-on-Wye



Tuesday 3rd December 2019
Much Birch Community Hall
7.30pm

Tickets £6.00 to include light refreshments

Tel: 01981 540980 or 01981 540647

Proceeds for Fabric Fund Much Birch Church

Herefordshire

Advanced Drivers



better, safer

Feel safer, driving in today's traffic . . .

Join in one of our **Driver Refresher Days** which aim to help you feel more confident and enjoy driving more by:

- getting up to date with the rules of the road
- learning safer driving tips and techniques
- putting them into practice in your own car

Or assess how good your driving is on an informal **FREE** Assessment Drive. No testing involved.

We hold these popular events throughout the year, from locations including Much Birch, Hereford, Leominster, Ledbury and Ross-on-Wye. Group discounts apply.

For details please contact our:

Events Coordinator on 01981 540382 or email events@advanced-drivers.org.uk or take a tour round our website: <https://advanced-drivers.org.uk>



Ring 01981 540382 today

We are your local Road Safety Charity (Reg. no. 049679).
Official Provider of the **IAM RoadSmart Advanced Driver Course**

Aconbury Shepherd Huts



Our huts are hand built to the highest of standards. Our standard hut includes insulation, double glazing, electrics and decoration.

Uses include craft room, play house, sleep over's etc.

Come and see our display hut or request our new brochure

We also build stables, field shelters, garden sheds, play houses, garden features and bespoke gates. Please ring for our dedicated brochure

Stephen Turner. The Underhills, Hollybush Lane, Much Birch, Herefordshire. HR2 8HX.

**Telephone: Office 01981 540090
Mobile 07768 206296**

**www.aconburyshepherdhuts.co.uk
turnersofcrossways@btinternet.com**



HOLLYBUSH HIRE

Vintage Tea Set Hire

Hire a wonderful collection of vintage china for your special occasion.

Call or e-mail today for a no obligation discussion about your requirements.

Woodfield, Hollybush Lane, Much Birch, HR2 8HX

07989 854593 / 01981 541109

emmadeer@hotmail.co.uk

Tea Cups, Saucers & Tea Plates

Sandwich / Cake Plates

Teapots, Sugar Bowls & Milk Jugs

Cake Stands

Lanterns, Mirrors

healthyfeet

mobile clinic

Mobile Foot Clinic

Experienced, Fully Qualified and Registered
Foot Health Practitioners, First Aid Trained
and DBS Police Checked



- Nail Trimming
- Thickened Nails
- Corns
- Callus (hard skin)
- Cracked Heels
- Verrucas
- Fungal Nails & Infections
- Ingrown Toenails
- Diabetic Foot Care

Checked ✓
Disclosure &
Barring Service



Sophie Limming Dip FH MCFHP MAFHP
Qualified & Registered Foot Health Practitioner

Tel: 0749 309 2960

sophie@healthyfeetclinic.co.uk www.healthyfeetclinic.co.uk

Much Birch Parish Council

Parish Clerk Mrs Alison Wright
Longfield House, Gooses Foot, Kingstone, , Herefordshire HR2 9NE
Tel. 01981 250860: Email: muchbirchclerk@hotmail.co.uk

The Parish Council discussed representations for several local planning applications which would be communicated to the Planning Authority. There was some discussion of footpaths in the parish and the contact details for the Footpath Officer for Much Birch are as follows: Steve Owen at e mail: herefordsteve@aol.com

The Meeting also heard a further update on the Neighbourhood Plan which is now at the stage of the Regulation 14 draft within the process. Future Neighbourhood Plan Steering Group Meetings are coming up and all are welcome to attend.

Please see below for future Steering Group Meeting dates:

Dates of Neighbourhood Plan Steering Group Meetings for 2019
All to be held at Much Birch Community Hall from 7.30pm

31 October, 28 November.

A reminder that the dates for the remaining **2019 Parish Council Meetings** are as follows: November 7 and December 5.

Please see notice boards and website for agendas. As always the public and press are more than welcome to attend and will have the opportunity to speak directly to their representatives.

A reminder that **Your Much Birch Parish Councillors are:-**

Cllr Alison Cook (Chair) Jasmine Cottage, Wrigglebrook Lane, Kingsthorpe, Hereford, HR2 8AW, e mail thecooks@wyenet.co.uk Tel. 01981 540703

Cllr Steve Turner (Vice Chair) The Underhills, Hollybush Lane, Much Birch, Hereford, HR2 8HX, e mail turnersofcrossways@btinternet.com and Tel. 01981 540090

Cllr Andrew Crum Anfield House, Barrack Hill, Kingsthorpe, Hereford, HR2 8AX, e mail a.crum@btinternet.com
Tel. 01981 540002

Cllr Roisin Burge The Old Hall, Barrack Hill, Little Birch, Herefordshire, HR2 8AX roisinburge@hotmail.com Tel. 01981 540724

Cllr David Baldwin The Granary, Much Birch, Herefordshire, HR2 8HS baldwin79@btinternet.com Tel. 01981 541198

Cllr Veronica Thomas 4, Queens Close, Wormelow, Hereford, HR2 8FD Tel. 01981 540646 (no e mail)

Full minutes of the meetings and information etc. can be found on the Parish Council website following the link found in this summary. www.muchbirchparish.org.uk.

You can also find us on Twitter at <https://twitter.com/MuchBirchPC> and Facebook at <https://www.facebook.com/groups/Much.Birch.Parish>



WYE BATHROOMS

Local family run company. Design & installation of Bathrooms & shower rooms

We are also registered with NIC-EIC for all your Electrical work

Call Paul for a free quotation
Or visit
www.wyebathrooms.co.uk

07894-563897



APPROVED CONTRACTOR

Improve flexibility, build strength and develop control and endurance

PILATES

with Alison Allan

Little Dewchurch Village Hall
(3 miles from the A49,
between Hereford and Ross)

Mondays (am) and Wednesdays (pm)

Telephone: 01432 840491

Email: alisonpilates2016@gmail.com



STOTT PILATES
merrithew CORPORATION

Your Little Birch Parish Council Councillors are:-

Cllr Peter Rees	Chair	01981 541356	panddrees@gmail.com
Cllr Janet Gwinnett	Vice Chair	01981 540651	janetgwinnett@hotmail.com
Cllr Kate Dillon		01981 540364	kate@castlenibole.com
Cllr Michael Davies		01981 540129	mikeandmaradavies@gmail.com
Cllr Kate Robbins			kate_robbins@hotmail.co.uk
Angela Middleton	Volunteer Footpath Officer	01981 540377	ajbmiddleton@hotmail.co.uk
Sophie Glover	Clerk	01432 617306	lbpcclerk@gmail.com

Parish Council meetings usually happen at 7.30pm on the first Wednesday of the month and all parishoners are very welcome to attend. Agendas are posted on the Parish notice board at least three days in advance and are also on our web site.

Little Birch Parish Facebook Group



Find the latest news, events and business listings all in one place.

You are welcome to promote your local business, advertise a local event or post news or information of interest to the village and surrounding area.

Search for *Little Birch Parish Group* on Facebook

Murphy's Paw

The home of happy woofers!



FB: Murphy's Paw
Doggie Services

Doggie Daycare
One to One Grooming
Home Boarding

Tump Lane, Much Birch
Tel: Tricia 07732 286069

murphypaw2005@gmail.com

www.murphypaw.co.uk
Providing a true "home from home" environment.

We welcome friends, old and new!

Lowri Anderson PCSO 40247

Hereford City Southside and Rural SNT

West Mercia Police



South Hereford Rural Safer Neighbourhood Team (SNT)



Get in touch

101 to talk to your local SNT or report a crime
herefordsouthside.snt@westmercia.pnn.police.uk
www.westmercia.police.uk

Herefordshire Cops / @southsidecops

Only call 999 in an emergency, when a crime is in progress or life is in danger.

For daily updates on incidents in your area register for our Dotmailer service via www.westmercia.police.uk.

Make the difference

For more information about becoming a Special Constable, please visit,

Warwickshire Police: www.warwickshire.police.uk/specialconstables

West Mercia Police: www.westmercia.police.uk/specialconstables